

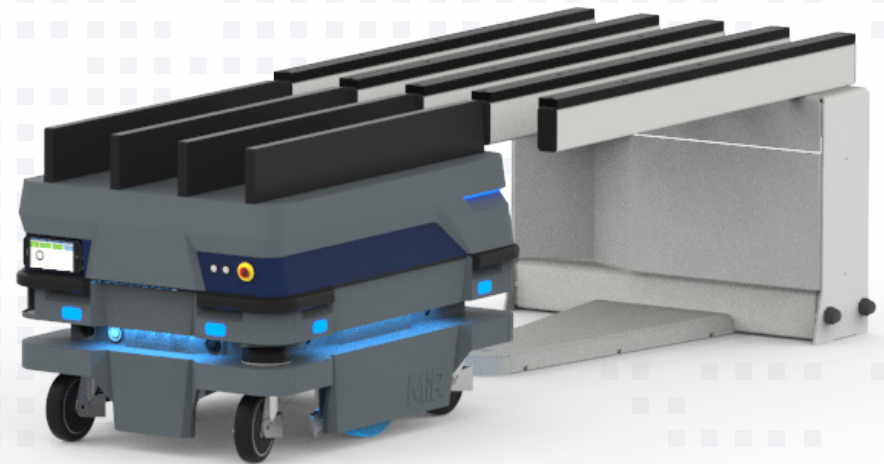
Quick Mover

QM180

Our Quick Mover QM180 can pick up goods from our gates and can also pick up our Shelf Cart SC400. The QM180 is placed on top of the mobile robot and functions by a lifting mechanism integrated in the module. The provided smartphone allows users to manually control the robot and adjust specialized work processes, which forms efficient automation of internal transportation. Our QM reduces costs and increases productivity.

Your key benefits

- Simple set up and installation - can be up and running within a few hours, thereby providing a complete and flexible solution with our gate modules and carts
- Comes with smartphone to manually control and monitor the module when on the mobile robot
- Flexible standard product designed to simply adjust to specialized work processes
- Possibility to personalize the module by adding company graphics to the module



The QM180 docking in to the SG155

Technical specifications

Parameter	Quick Mover QM180
Dimensions	800 x 600 x 240 mm 31" x 24" x 9.4"
Handling capacity	MiR100: 70 kg 154 lbs MiR200: 170 kg 374 lbs MiR250: 220 kg 485 lbs
Application weight	30 kg 66 lbs
Transport area	800 x 600 mm 31" x 24"
Centre distance between arms	140 mm 5.5"
Colour	RAL 7011 & RAL 5011

